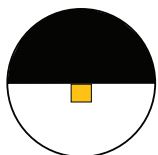
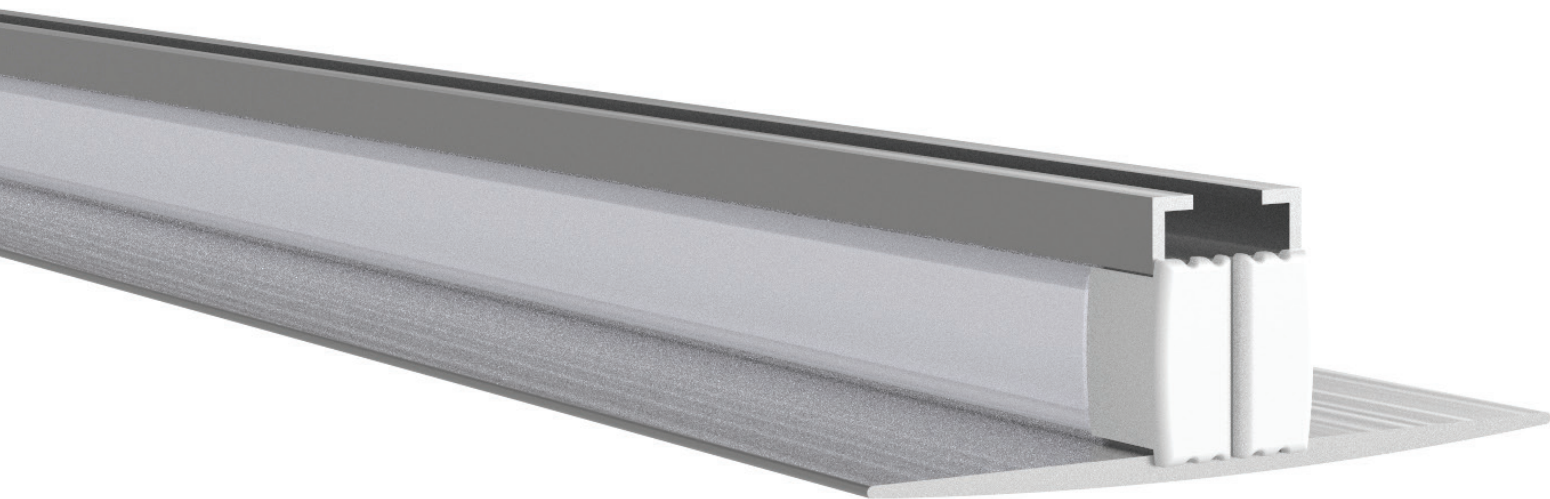
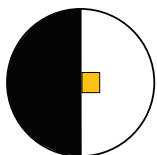


# DEWAR

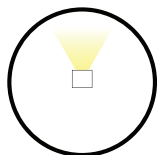
Design Guide



Ceiling



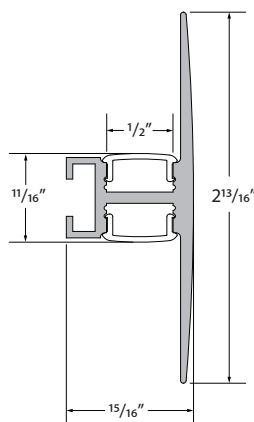
Wall



In-Direct



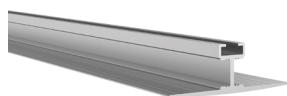
## PROFILE DIMENSIONS



## AVAILABLE TIVOTAPE™ OPTIONS

<b>SB</b>	<b>XS</b>	<b>HO</b>	<b>HD</b>	<b>ELITE</b>	<b>VHO</b>	<b>Tunable White</b>	<b>RGB</b>	<b>RGBW</b>
2200K	2400K	2700K	3000K		3000K	3500K		
	3500K	4000K	5000K					
						2200K	3000K	
						2700K	4000K	
						2200K	6500K	

## ORDERING INFORMATION



**DWAR-CHAN-SLV-6.5**  
Anodized Aluminum Extrusion,  
available in 6.5' lengths



**DWAR-LNS-OPL-6.5**  
Lens, opal, length 6.5'



**DWAR-LNS-CLR-6.5**  
Lens, clear, length 6.5'



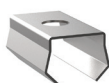
**DWAR-LNS-DIF-6.5**  
Lens, diffuser, length 6.5'



**DWAR-EC-01**  
Solid End Cap

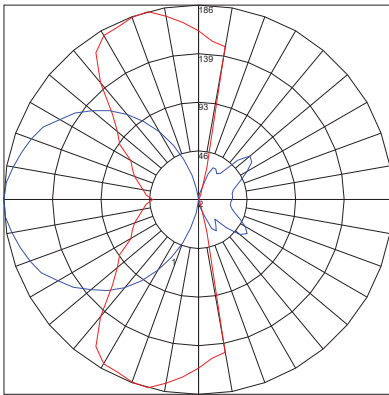


**DWAR-EC-02**  
Powerfeed End Cap



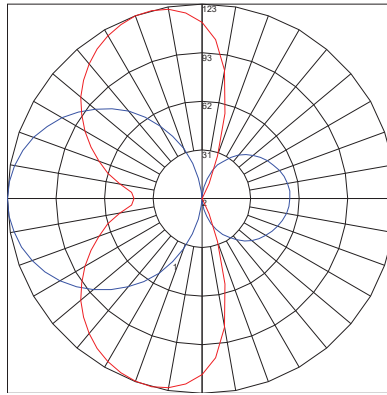
**DWAR-CLP-SLV**  
Clip, Metal

**PHOTOMETRICS BASED ON 3000K/HO/ELITE TIVOTAPE**



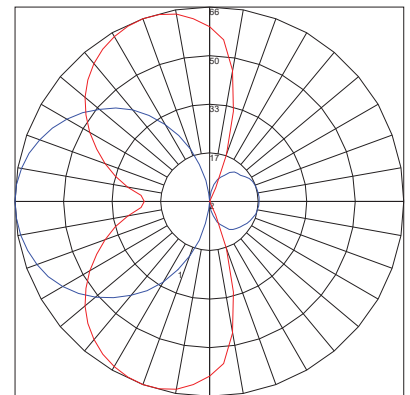
**DEWAR WITH CLEAR LENS**

Lumens per foot: 674.70  
Watts per foot: 7.71  
CRI : 94.7  
Peak Candela: 185.84



**DEWAR WITH DIFFUSED LENS**

Lumens per foot: 537.38  
Watts per foot: 7.73  
CRI : 95.3  
Peak Candela: 123.39



**DEWAR WITH OPAL LENS**

Lumens per foot: 297.85  
Watts per foot: 7.76  
CRI : 97.9  
Peak Candela: 66.47

